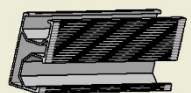


Tile Roof PV Mounting System

Product Features :

1. Fewer components. Modular design, all the parts are prefabricated in factory. So only 6 components needed to be assembled in the field. See left pictures;
2. Fewer tools needed. Highly standardized. Only simple tools needed. About 4 tools. See right pictures ;
3. For other types of tile roof, only hook need to be changed.



Product Specification:

1. Roof Type: tile roof, asphalt shingle roof
2. Material: Al6005 and SS304;
3. PV Type: major brand PV module with or without frame;
4. Module Orientation: portrait or landscape;
5. Surface: B, C
6. Roughness:
7. Wind Speed: $\leq 60\text{m/s}$;
8. Snow Load: $\leq 1.4\text{KN/m}^2$;
8. Average Distributed Weight: 2.8PSF

Shanghai Ecopro Technology Co., Ltd.

Tel : +86 21 53935509

Email: sales@ecopro-tech.com

www.ecopro-tech.com